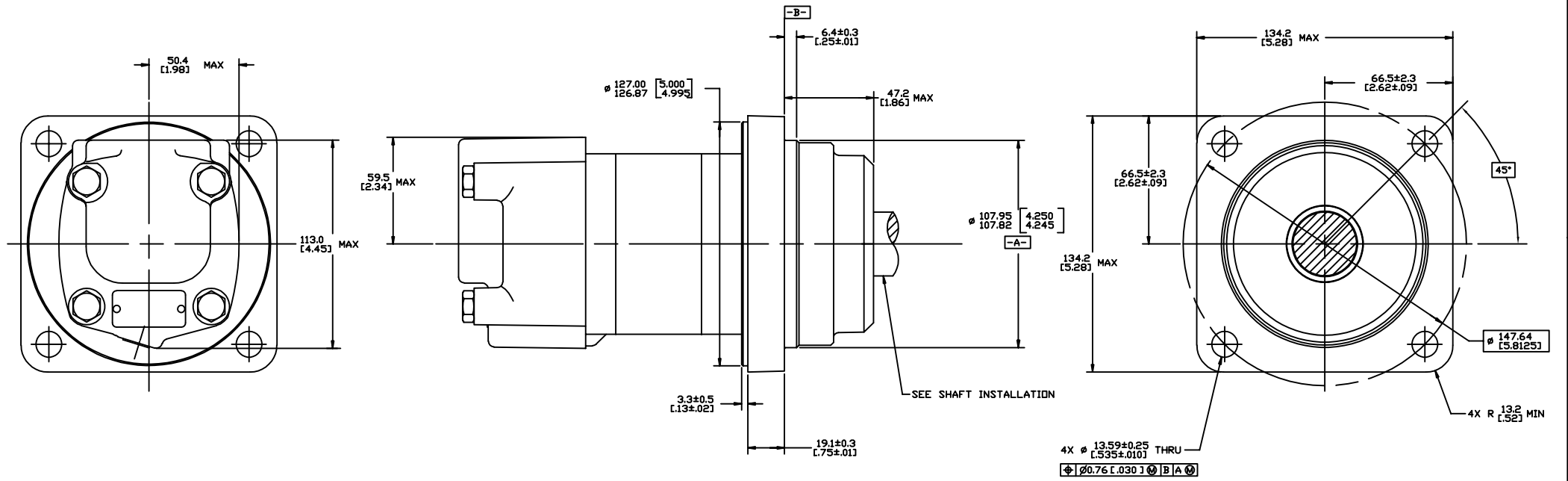
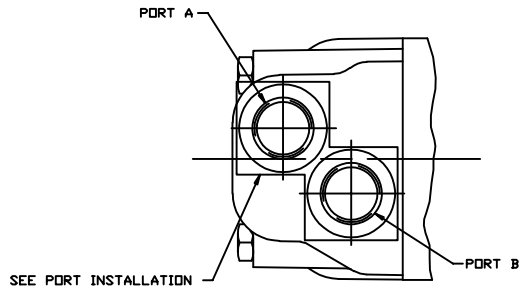


SYM	REVISION	BY	DATE	ECN
A	ENGINEERING RELEASE	RAF	4-25-93	M8096
B	REVISED	AGJ	5-26-93	22833
C	-1<(4B)ADDED Ø93.0/91.4 [3.66/3.60] -2<(4C)ADDED 21.6 [.85]MAX -3<REVISED PICTORIALY	JMS	7-25-99	33164
D	-1<(4B)REMOVED Ø 93.0/91.4[3.66/3.60] -2<REVISED PICTORIALY -3<(4B)ADDED Ø 96.0/94.5 [3.78/3.72]	MLL	11-25-00	36676
E	<4A>NOTE 2 WAS MOUNTING TYPE: B	AGJ	5/13/02	41044
F	-1<(4B)REMOVED 96.0/94.5[3.78/3.72] -2<(4C)REMOVED 21.6[.85]MAX.	AAK	3-2-04	46977
G	REVISED PICTORIALY	VBH	7/9/07	0008921
H	<6A> ADDED MOUNTING OPTION BP	KNR	8-18-08	M73504A
J	REVISED	VBH	5-28-09	M76048
K	-1<(1B)ADDED DIM Ø147.6[5.8125] -2<(1C)ADDED 45°	AAB	4-29-10	M79020



NOTE

1 ROTATION:
STANDARD: WHEN FACING SHAFT END OF MOTOR, SHAFT TO ROTATE) CLOCKWISE WHEN PORT 'A' IS PRESSURIZED COUNTERCLOCKWISE WHEN PORT 'B' IS PRESSURIZED
REVERSE: WHEN FACING SHAFT END OF MOTOR, SHAFT TO ROTATE) CLOCKWISE WHEN PORT 'B' IS PRESSURIZED COUNTERCLOCKWISE WHEN PORT 'A' IS PRESSURIZED

2 MOUNTING TYPE: AB,BP
WHEEL, 4 BOLT, Ø 108.0 [4.25] PILOT
Ø 13.59 [.535] HOLES ON Ø 147.6 [5.81] BOLT CIRCLE
Ø 127.0 [5.00] REAR MOUNT PILOT

REVIEWED FOR CLASSIFICATION PER ESP-042

UNLESS OTHERWISE SPECIFIED ALL DIMENSIONS ARE IN INCHES
MILLIMETERS CHECKED

TOLERANCES
X * ---
XX * REF
XXX * ONLY

UNSPECIFIED RADI AND FINISH BY DATE

UNSPECIFIED DRAFT ANGLES AND THIRD ANGLE PROJECTION DO NOT SCALE

DRAWING BASED ON ANSI Y14.5M-1982

EATON CORPORATION - CONFIDENTIAL AND PROPRIETARY NOTICE: DO NOT REPRODUCE, DISSEMINATE OR TRANSMIT WITHOUT THE WRITTEN PERMISSION OF EATON CORPORATION. Eaton Corporation, Inc. 1000 Erie Drive, Erie, PA 16594

DATE: 4-30-93
CHECKED: KJR
BY/DATE: 5-3-92

DATE: 5-3-92
CHECKED: KJR
BY/DATE: 5-3-92

TITLE: 2000 SERIES MOTOR INSTALLATION

NUMBER: A-664-001

SCALE: 1/1 SHEET: 1 OF 1