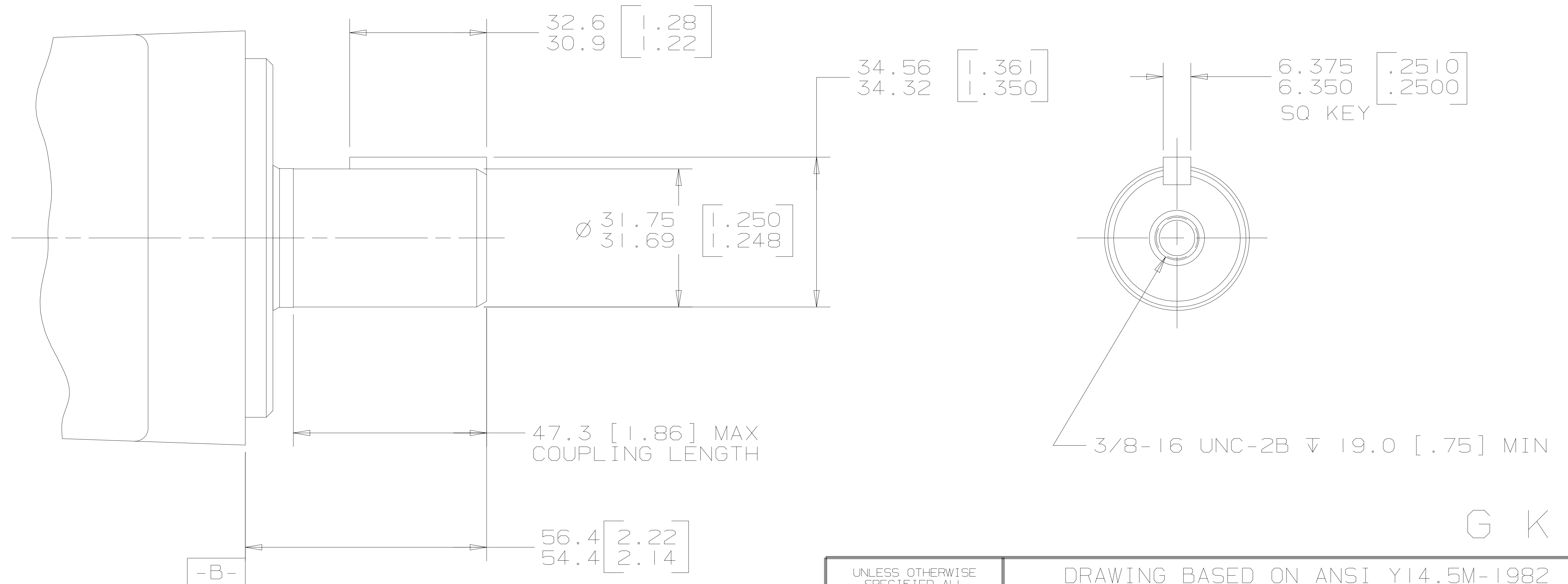


REV	DESCRIPTION	BY	DATE	ECN
A	ENGINEERING RELEASE	GCB	8-6-98	M20214
B	NOTE 1 WAS MOUNTING TYPE: OPTION B	AGJ	5-13-02	41044
C	56.4/54.4 [2.22/2.14] WAS 56.6/54.4 [2.23/2.14]	AGJ	5-17-04	47918
D	NOTE 2 WAS OUTPUT SHAFT: OPTION 81	PM	4-4-06	54522



G K S

NOTE

- 1 MOUNTING TYPE: OPTION AC, BA & BE
- 2 OUTPUT SHAFT: OPTION 32

UNLESS OTHERWISE SPECIFIED ALL DIMENSIONS ARE IN INCHES <input type="checkbox"/> MILLIMETERS [INCHES] <input checked="" type="checkbox"/>	DRAWING BASED ON ANSI Y14.5M-1982	
	THE REPRODUCTION, DISTRIBUTION, AND UTILIZATION OF THIS DOCUMENT, AS WELL AS THE COMMUNICATION OF ITS CONTENTS TO OTHERS WITHOUT EXPLICIT AUTHORIZATION IS PROHIBITED. OFFENDERS WILL BE HELD LIABLE FOR THE PAYMENT OF DAMAGES. ALL RIGHTS RESERVED IN THE EVENT OF THE GRANT OF A PATENT, UTILITY MODEL, OR DESIGN. (PER ISO 16016)	
TOLERANCES .X ± ---- .XX ± REF .XXX ± ONLY < ± ----	DRAWN BY/DATE GCB 8-31-978 CHECKED BY/DATE AGJ 9-1-98 ENGRG BY/DATE KJR 9-3-98 METALLURGY BY/DATE -----	MATERIAL/HEAT TREAT TITLE 2000 SERIES MOTOR SHAFT INSTALLATION
UNSPECIFIED RADII ARE ----	 THIRD ANGLE PROJECTION	MICROINCHES <input type="checkbox"/> MICROMETERS [MICROINCHES] <input type="checkbox"/> ARITHMETICAL AVERAGE <input checked="" type="checkbox"/>
UNSPECIFIED DRAFT ANGLES ARE ----	DO NOT SCALE	NUMBER A-683-039 SCALE 1/1 SHEET 1 OF 1
DRAWING FORMAT CADD <input checked="" type="checkbox"/> MANUAL <input type="checkbox"/>		