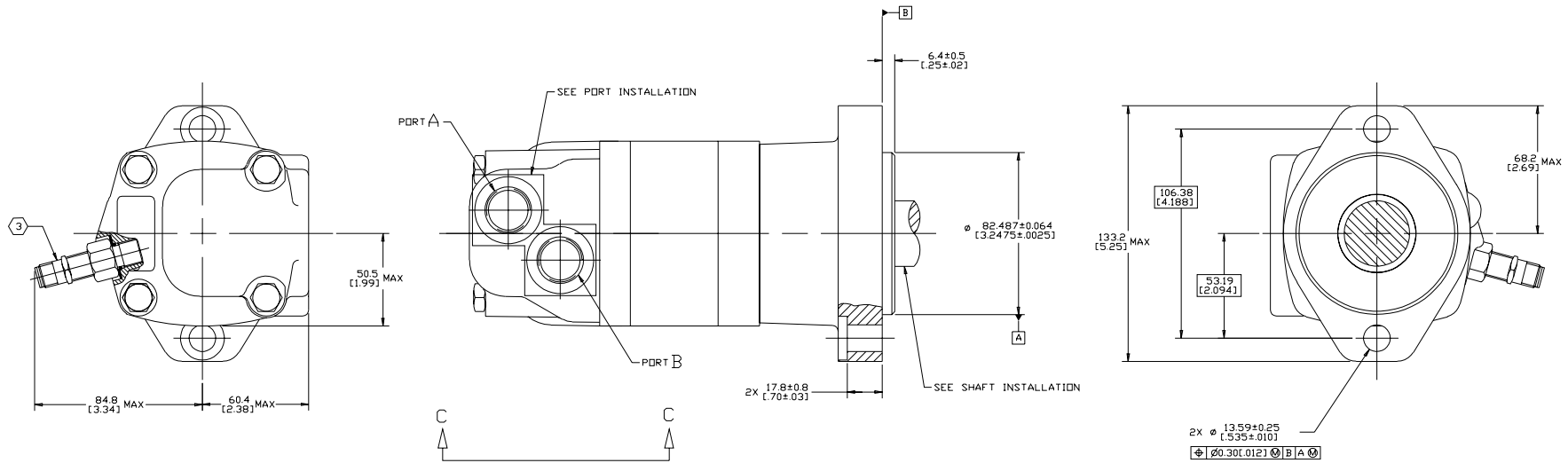


REV	DESCRIPTION	BY	CHK	DATE	ECN
A	ENGINEERING RELEASE	RAF		7-4-97	M17907
B	(6A) ADDED VIEW C-C	AGJ		10-7-99	33309
C	(4A) NOTE 2 WAS MOUNTING TYPE: C	AGJ		5-13-02	41044
D	(1) REVISED FOR STACK UP (2) DRAWING UPDATED TO ASME Y14.5-2009 STANDARD	ABH	CSG	10-21-13	M90835



NOTE

- 1 ROTATION:  
 STANDARD: WHEN FACING SHAFT END OF MOTOR, SHAFT TO ROTATE;  
 CLOCKWISE WHEN PORT "A" IS PRESSURIZED  
 COUNTERCLOCKWISE WHEN PORT "B" IS PRESSURIZED  
 REVERSE: WHEN FACING SHAFT END OF MOTOR, SHAFT TO ROTATE;  
 CLOCKWISE WHEN PORT "B" IS PRESSURIZED  
 COUNTERCLOCKWISE WHEN PORT "A" IS PRESSURIZED

- 2 MOUNTING TYPE: AC  
 STANDARD: 2 BOLT:  $\phi 82.6$  [3.25] PILOT  
 $\phi 13.59$  [50S] HOLES DN  $\phi 106.4$  [4.19]  
 BOLT CIRCLE "SAE A"

- (3) NOMINAL SENSOR OUTPUT WILL BE 30 ELECTRICAL PULSES  
 PER SHAFT REVOLUTION  
 SUPPLY VOLTAGE: 8 TO 28 Vdc  
 OUTPUT VOLTAGE: LOW .5 Vdc AT 10 mA; HIGH Vs-1 Vdc

ORIENTATION GROOVE MUST  
 BE ALIGNED AS SHOWN

VIEW C-C

REVIEWED FOR CLASSIFICATION PER ESP -042

UNLESS OTHERWISE SPECIFIED ALL DIMENSIONS ARE IN INCHES MILLIMETERS (CONVERSION)	DRAWING BASED ON ASME Y14.5-2009	
TOLERANCES	UNLESS OTHERWISE SPECIFIED: RA 7-7-97 SURFACE RCB 7-7-97 FINISH VJD 7-7-97 METALLURGY DRIFT ANGLES AS SHOWN D SIZE	MATERIAL HEAT TREAT TITLE <b>2000 SERIES MOTOR INSTALL</b> NUMBER <b>A-665-025</b> SCALE 1/1 SHEET 1 OF 1