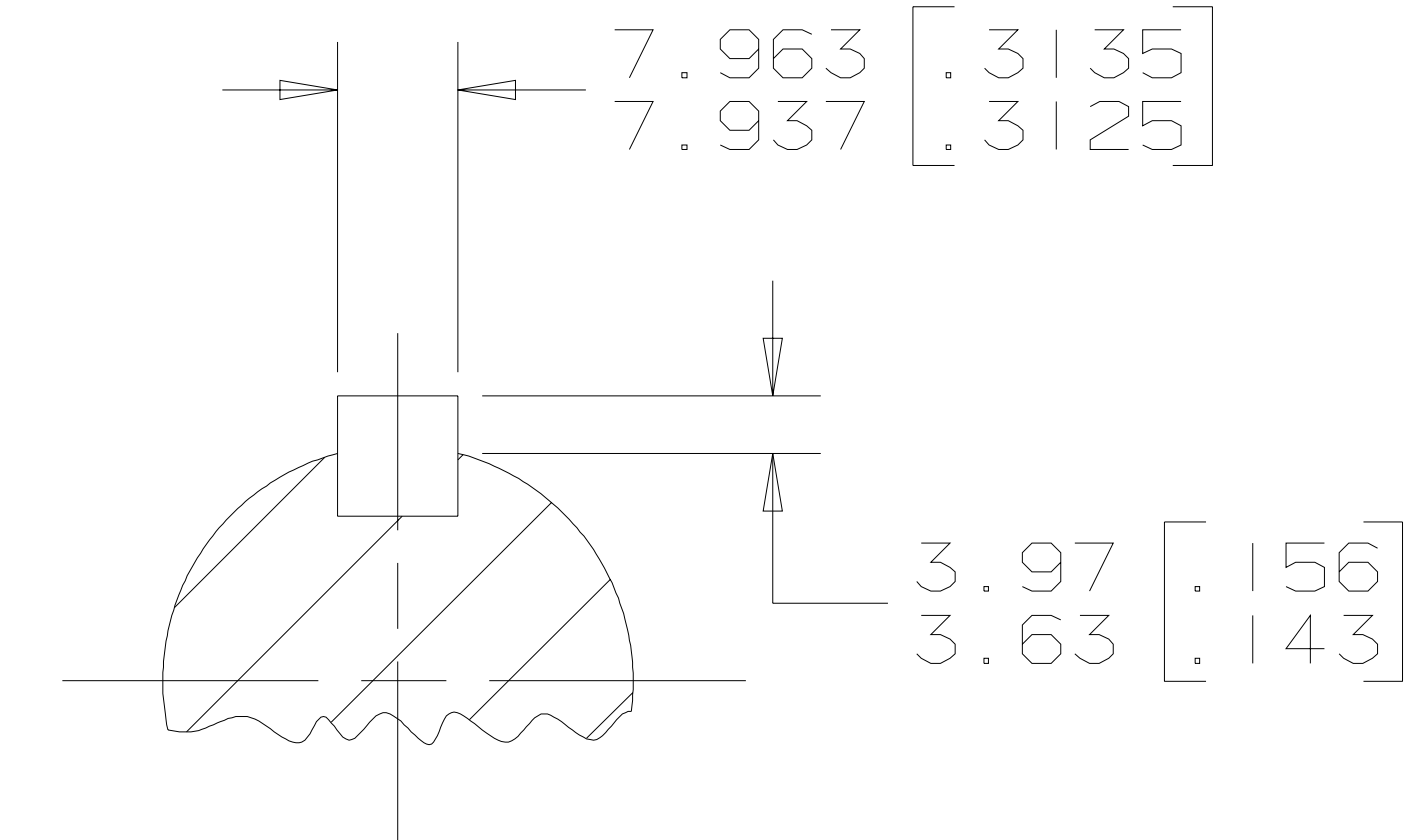
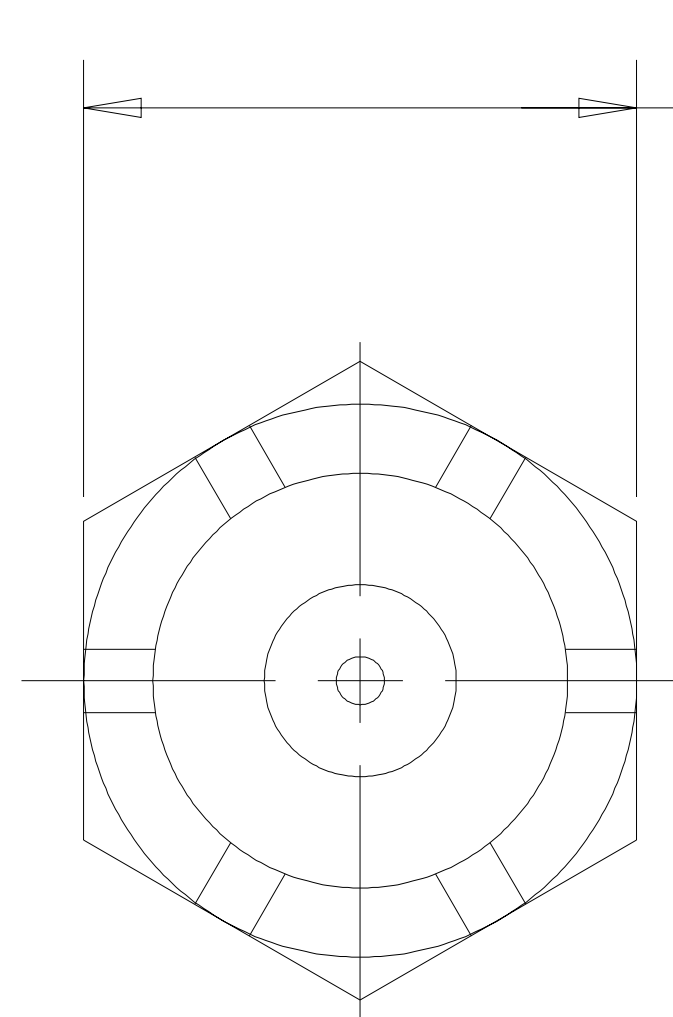
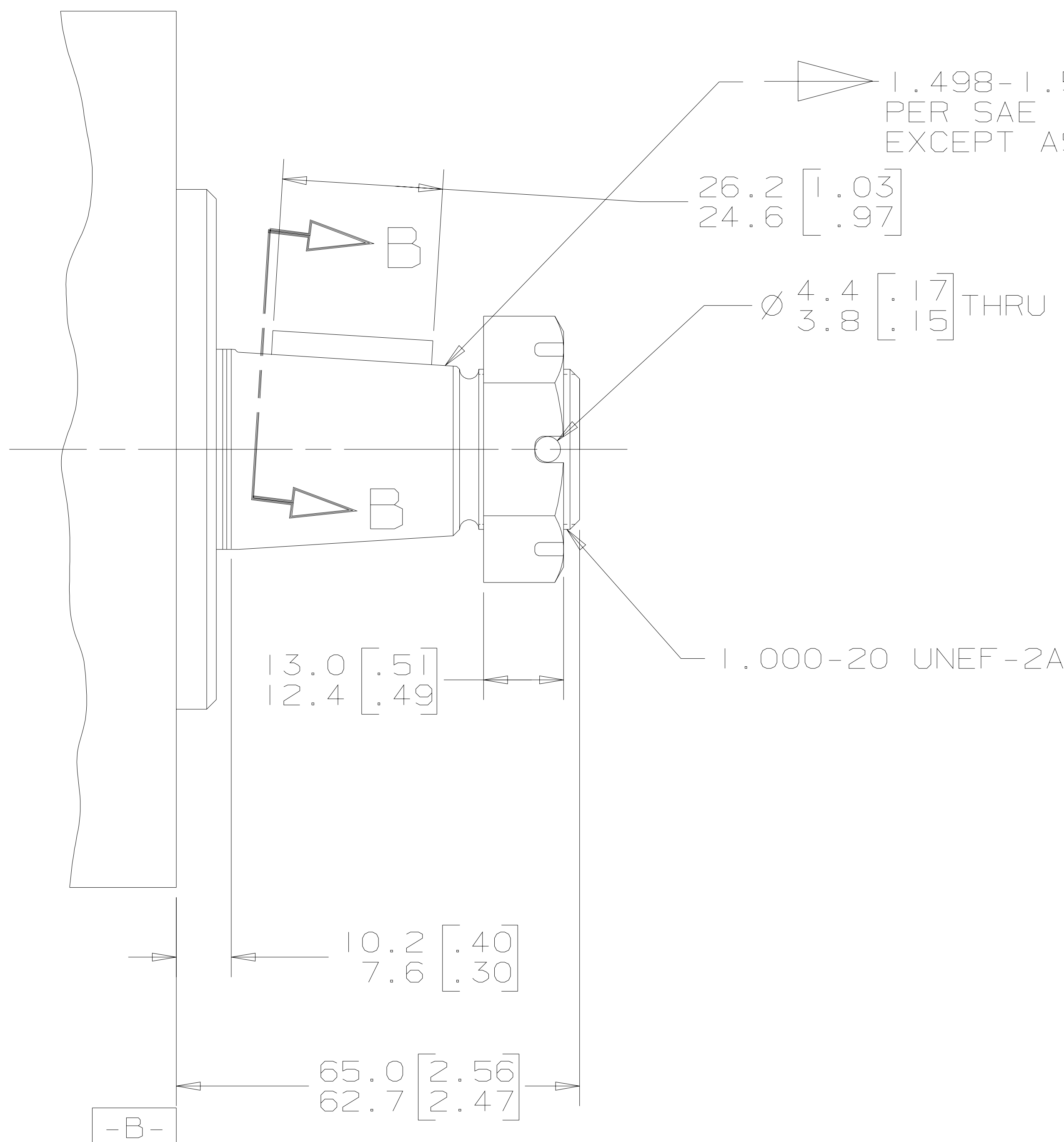


REV	DESCRIPTION	BY	DATE	ECN
A	ENGINEERING RELEASE	AGJ	5-26-93	22833
B	ADDED MOUNTING TYPE "N" TO NOTE 1	AGJ	9-8-93	M8627
C	ADDED MOUNTING TYPE "S" TO NOTE 1	KJR	5-17-94	M11794
D	NOTE 1 WAS MOUNTING TYPE: OPTION H,N AND S	AGJ	5-13-02	41044
E	REVISED	AGJ	5-17-04	47918
F	NOTE 2 WAS "...OUTPUT SHAFT..."	SKS	3-20-06	M66923
G	NOTE 2 WAS OUTPUT SHAFT: OPTION 03,25 & 44	PM	4-4-06	54522
H	REMOVED OUTPUT SHAFT OPTION "44"	AAK	2-1-07	55805

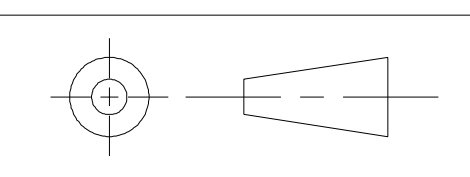


SECTION B-B

G K S

NOTE

- 1 MOUNTING TYPE: OPTION AH, AN AND AS
- 2 OUTPUT SHAFT: OPTION 03,18 & 44

UNLESS OTHERWISE SPECIFIED ALL DIMENSIONS ARE IN INCHES <input type="checkbox"/> MILLIMETERS [INCHES] <input checked="" type="checkbox"/>	DRAWING BASED ON ANSI Y14.5M-1982	
	NOTICE TO PERSONS RECEIVING THIS DRAWING AND / OR TECHNICAL INFORMATION Eaton Corporation claims proprietary rights in the information disclosed hereon. This document is issued in confidence and is not to be reproduced or used to manufacture anything shown hereon without the written permission of the Eaton Corporation.	
TOLERANCES .X ± ---- .XX ± REF .XXX ± ONLY < ± ----	DRAWN BY/DATE: A. JOHNSON 3-19-93 CHECKED BY/DATE: SDR 6-24-93 ENGRG BY/DATE: SZ 6-28-93 METALLURGY BY/DATE: ----	MATERIAL/HEAT TREAT TITLE: 2000 SERIES MOTOR SHAFT INSTALLATION
UNSPECIFIED RADII ARE ---- UNSPECIFIED DRAFT ANGLES ARE ----	 THIRD ANGLE PROJECTION DO NOT SCALE	EATON Eaton Corporation Hydraulics Division 15151 Highway 5 Eden Prairie, Mn. 55344
DRAWING FORMAT CADD <input checked="" type="checkbox"/> MANUAL <input type="checkbox"/>	MICROINCHES <input type="checkbox"/> MICROMETERS [MICROINCHES] <input type="checkbox"/> ARITHMETICAL AVERAGE <input checked="" type="checkbox"/>	NUMBER: A-687-003 SCALE: 1/1 SHEET: 1 OF 1