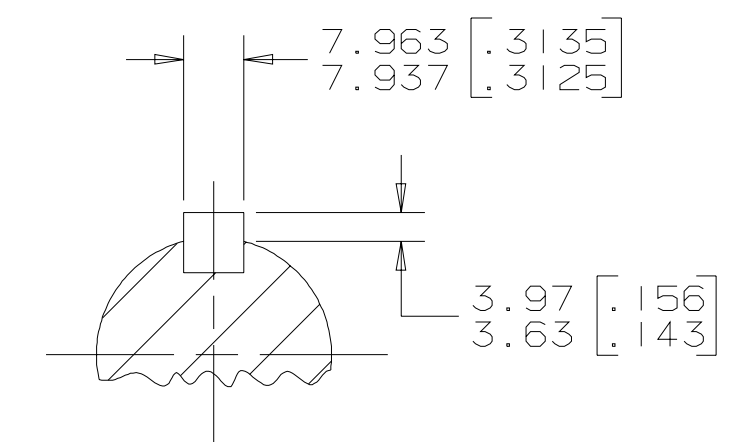
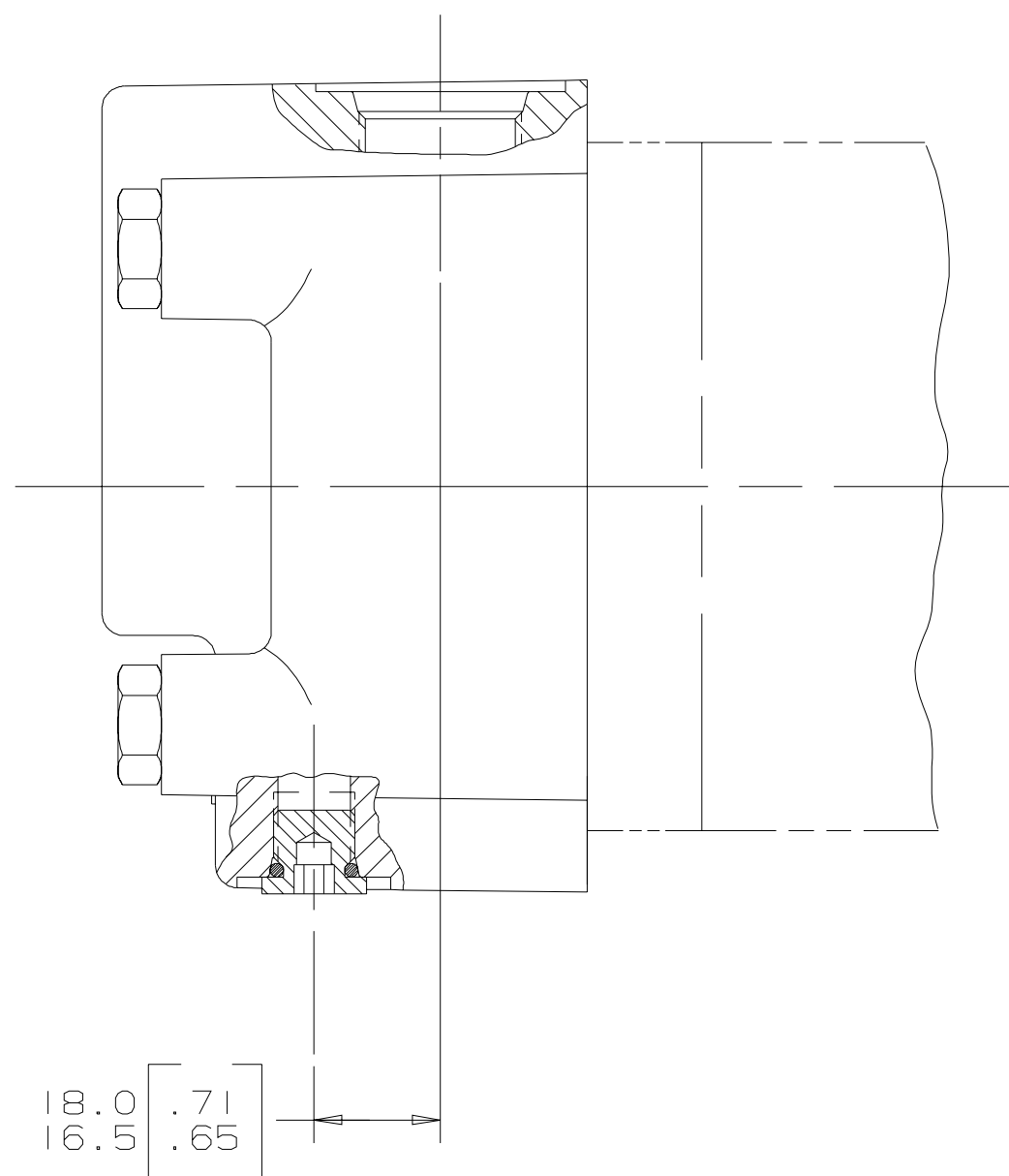
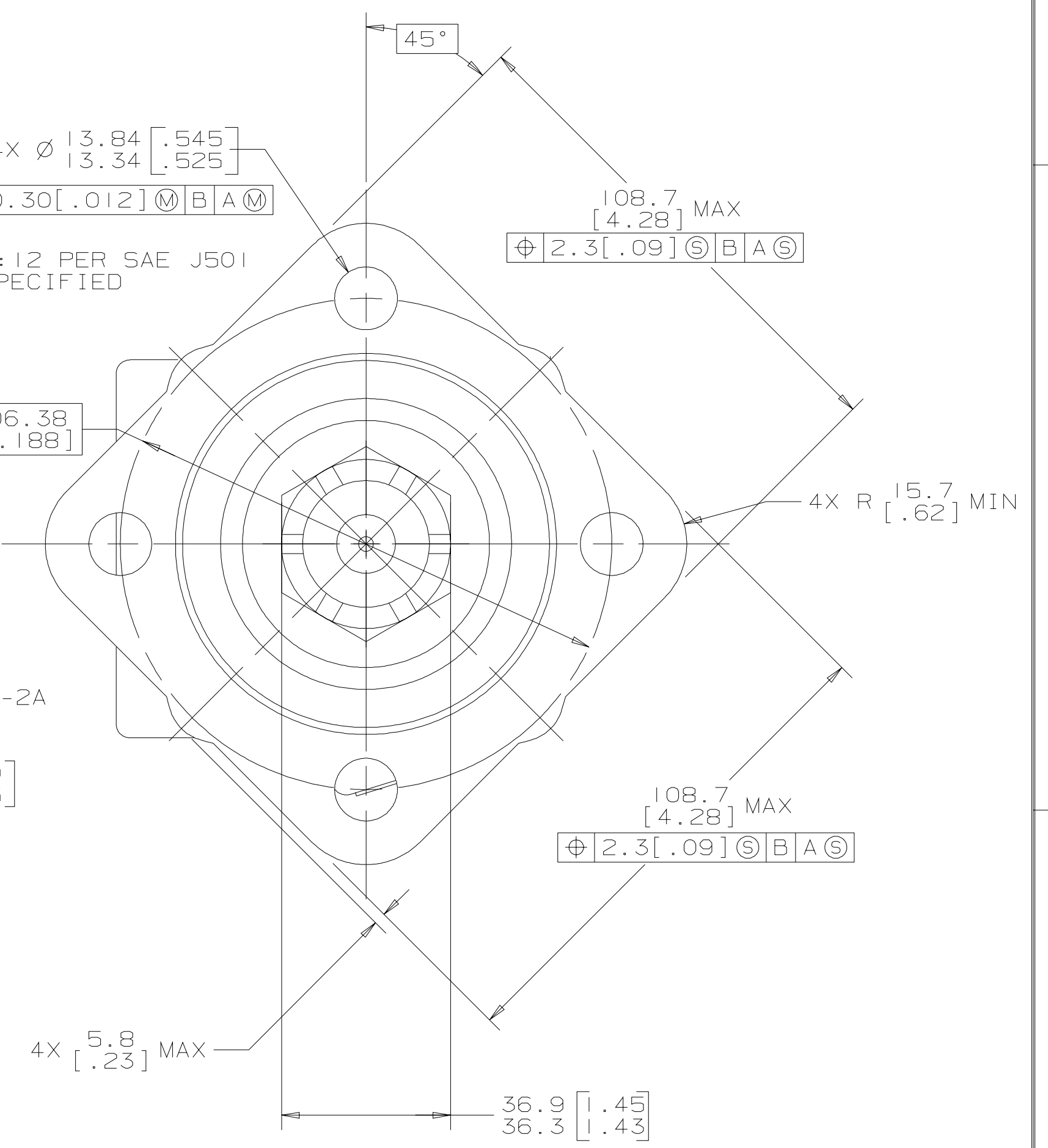
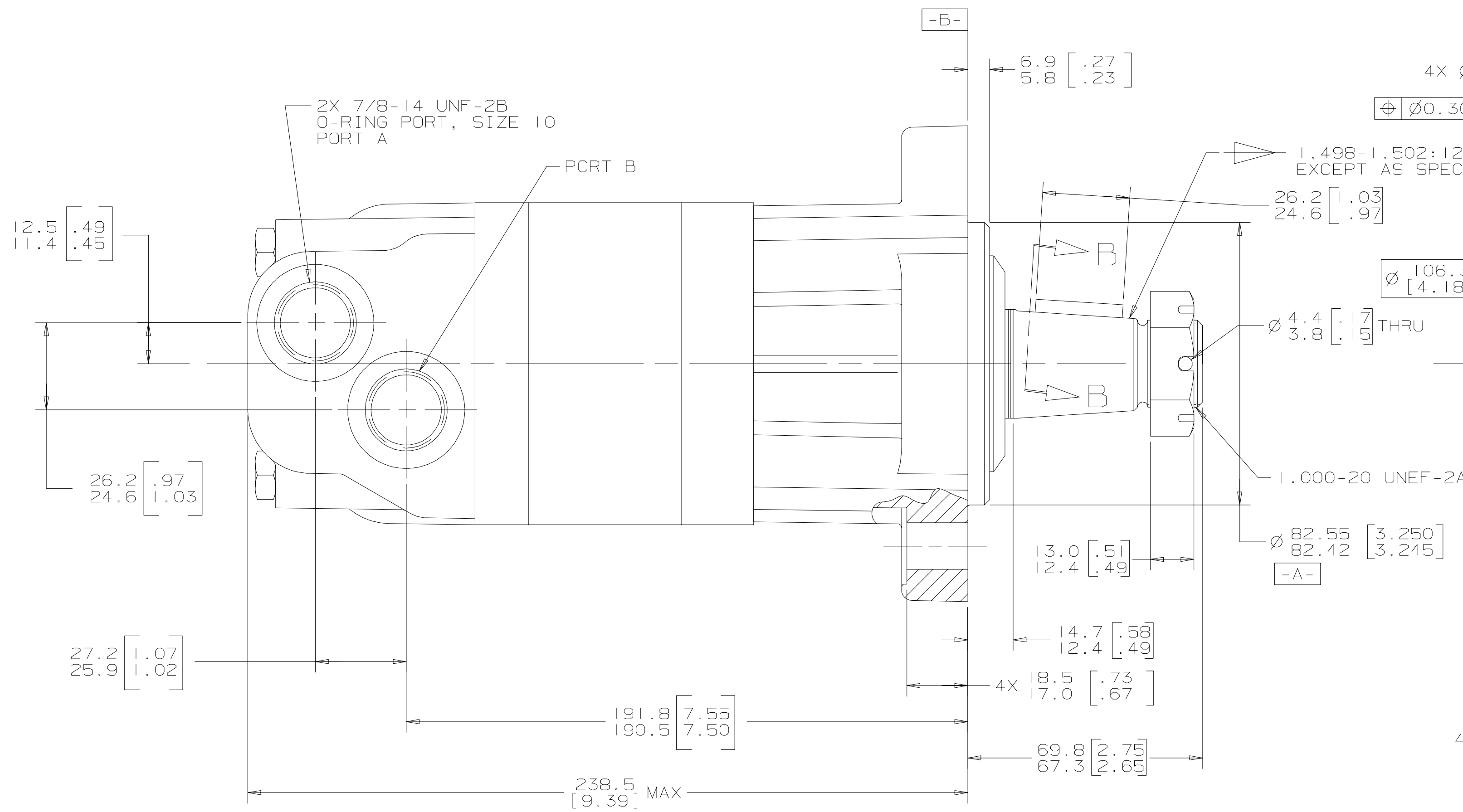
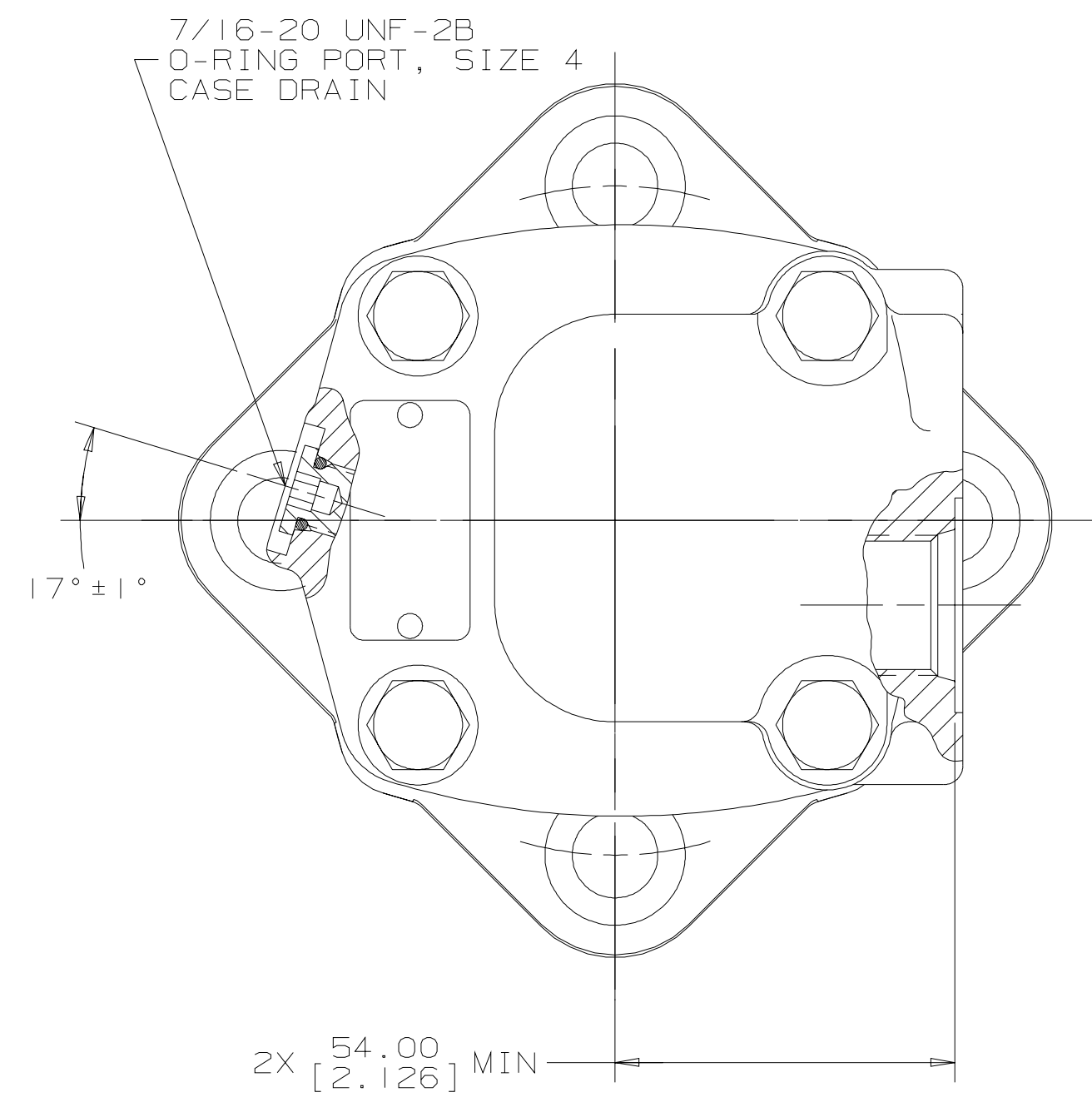


REV	DESCRIPTION	BY	CHK	DATE	ECN
A	ENGINEERING RELEASE	RAF		1-1-97	M16664
B	(8A) REVISED NOTES	AGJ		5-13-02	41044
C	(2D) 4X Ø 13.84/13.34 [.545/.525] WAS 4X Ø 13.72/13.46 [.540/.530]	AGJ		9-30-03	45504
D	(8A) NOTE 2 WAS "DISPLACEMENT: 24....."	RG		6-26-06	56090



SECTION B-B



- NOTE
- ROTATION:
STANDARD: WHEN FACING SHAFT END OF MOTOR, SHAFT TO ROTATE:
CLOCKWISE WHEN PORT "A" IS PRESSURIZED
COUNTERCLOCKWISE WHEN PORT "B" IS PRESSURIZED
 - DISPLACEMENT: 240
393.8 cm³/r [24.03 in³/r]
 - MOUNTING TYPE: AH
STANDARD: 4 BOLT: Ø 82.6 [3.25] PILOT
Ø 13.59 [.535] HOLES ON Ø 106.4 [4.19] BOLT CIRCLE
 - OUTPUT SHAFT: O3
Ø 31.75 [1.250] .125:1 TAPERED SHAFT PER SAE J501 WITH
1.000-20 UNEF-2A THREADED SHAFT END AND SLOTTED HEX NUT,
7.938 [.3125] SQ X 25.40 [1.000] STRAIGHT KEY
 - PORT TYPE: AA
7/18-14 UNF-2B SAE O-RING PORTS SIZE -10, STAGGERED PORTS
 - CASE FLOW OPTION: O1
7/16-20 UNF-2B SAE O-RING PORT SIZE -4

G S K

UNLESS OTHERWISE SPECIFIED ALL DIMENSIONS ARE IN		DRAWING BASED ON ANSI Y14.5M-1982	
INCHES <input type="checkbox"/>	MILLIMETERS <input checked="" type="checkbox"/>	NOTICE TO PERSONS RECEIVING THIS DRAWING AND / OR TECHNICAL INFORMATION	
TOLERANCES		Eaton Corporation claims proprietary rights in the information disclosed herein. This document is issued in confidence and is not to be reproduced or used to manufacture anything shown herein without the written permission of the Eaton Corporation.	
.XX ±----	----	DRAWN BY/DATE: RAF 1-7-97	MATERIAL/HEAT TREAT
.XXX ±----	----	CHECKED BY/DATE: WRD 1-10-97	
UNSPECIFIED RADII ARE	----	ENGR. BY/DATE: MLB 1-10-97	TITLE
UNSPECIFIED DRAFT ANGLES ARE	----	METALLURGY BY/DATE	2000 SERIES MOTOR INSTALL
DRAWING FORMAT CAD <input checked="" type="checkbox"/> MANUAL <input type="checkbox"/>	THIRD ANGLE PROJECTION	MICROMETERS <input checked="" type="checkbox"/> NUMBER	104-1851-006
	DO NOT SCALE	ARTHEMATICAL AVERAGE	SCALE 1/1 SHEET 1 OF 1