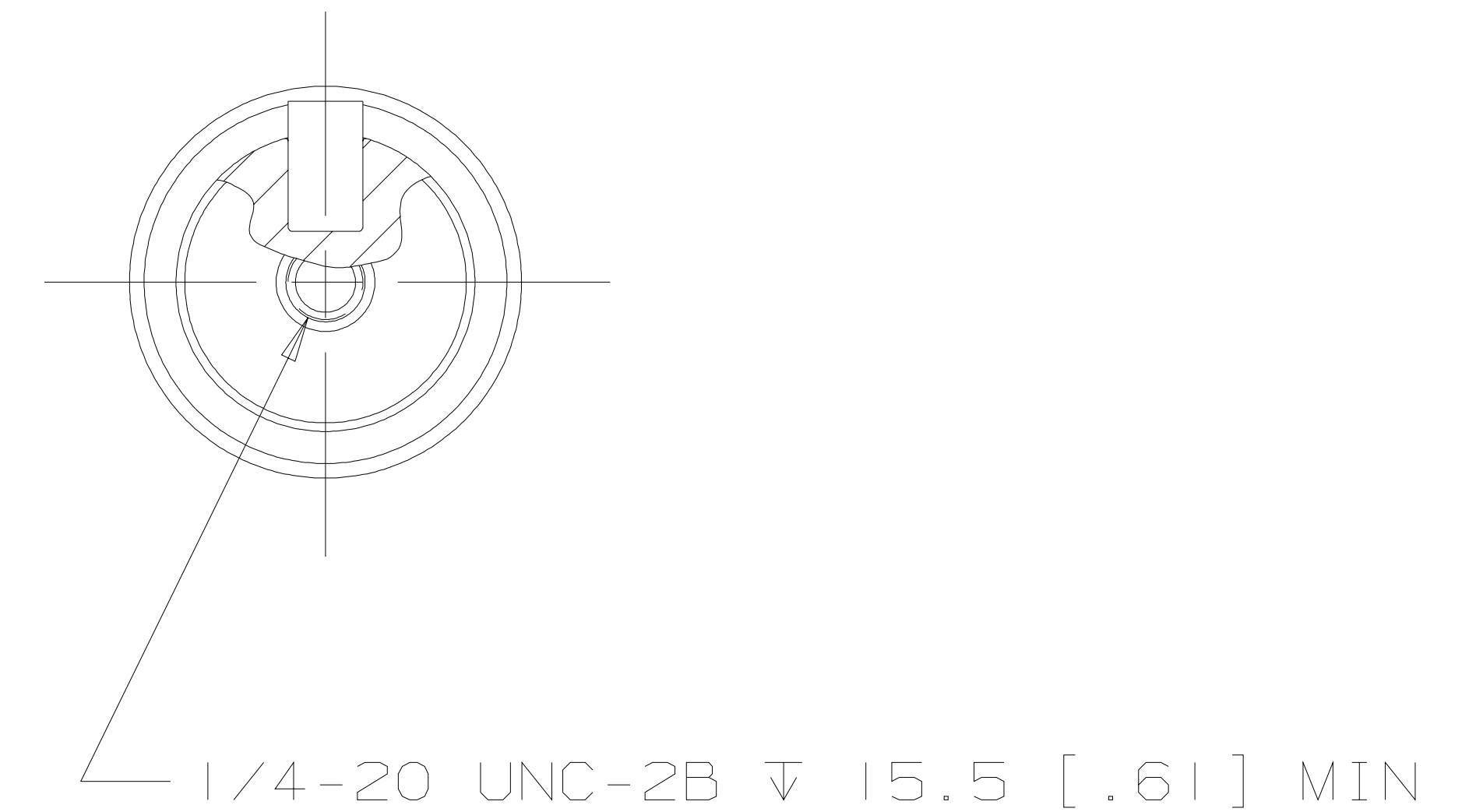
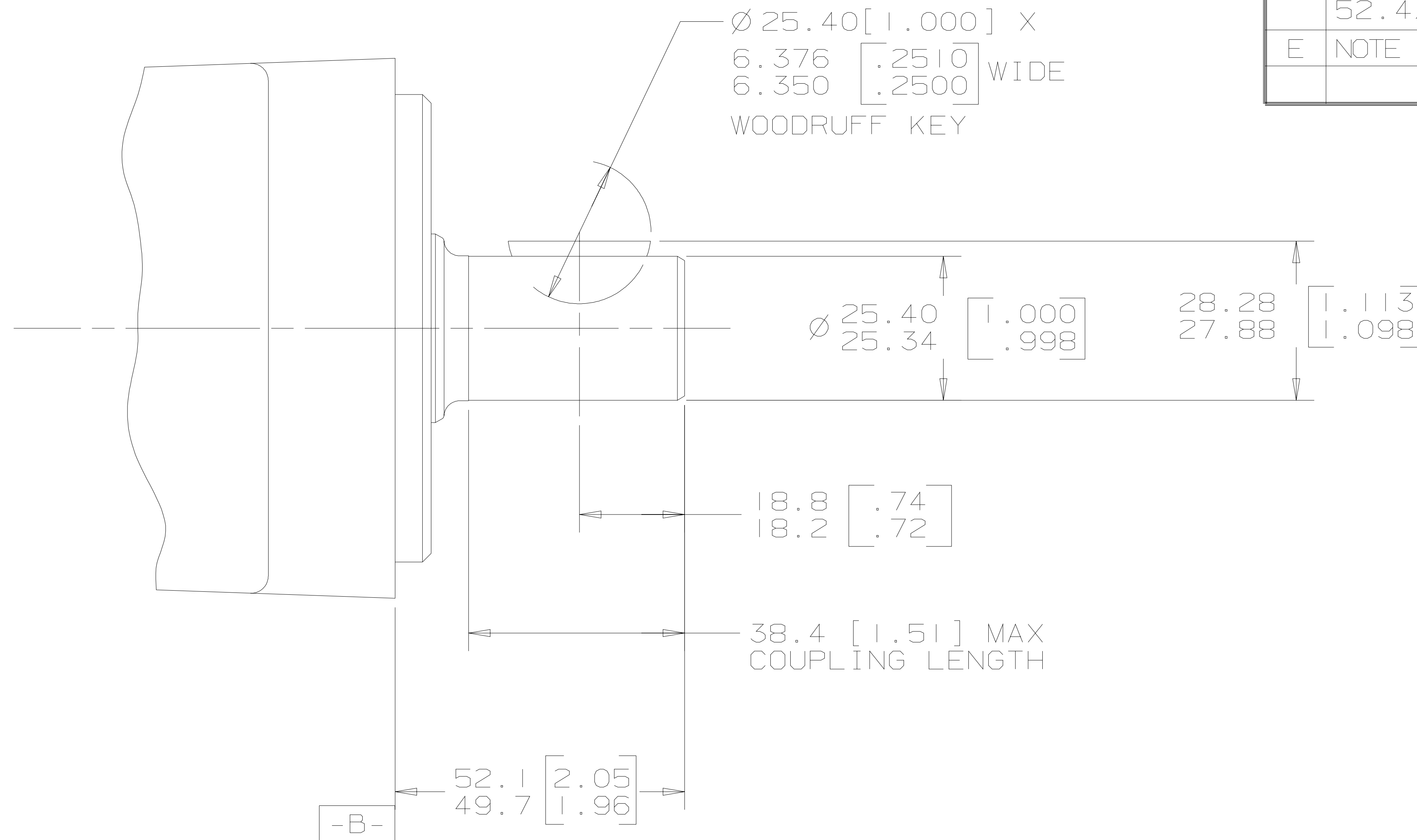


REV	DESCRIPTION	BY	DATE	ECN
A	ENGINEERING RELEASE	AGJ	5-26-93	22833
B	ADDED DISTRIBUTION CODE C	CMR	8-19-98	31690
C	NOTE 1 WAS MOUNTING TYPE: OPTION C	AGJ	5-13-02	41044
D	52.1/49.7 [2.05/1.96] WAS 52.4/49.7 [2.06/1.96]	AGJ	5-17-04	47918
E	NOTE 2 WAS OUTPUT SHAFT: OPTION 01 & 22	PM	4-4-06	54522



C G K S

NOTE

- 1 MOUNTING TYPE: OPTION AC, BA & BE
- 2 OUTPUT SHAFT: OPTION 01 & 15

UNLESS OTHERWISE SPECIFIED ALL DIMENSIONS ARE IN INCHES <input type="checkbox"/> MILLIMETERS [INCHES] <input checked="" type="checkbox"/>	DRAWING BASED ON ANSI Y14.5M-1982	
	NOTICE TO PERSONS RECEIVING THIS DRAWING AND / OR TECHNICAL INFORMATION Eaton Corporation claims proprietary rights in the information disclosed hereon. This document is issued in confidence and is not to be reproduced or used to manufacture anything shown hereon without the written permission of the Eaton Corporation.	
TOLERANCES .X ± ---- .XX ± REF .XXX ± ONLY < ± ----	DRAWN BY/DATE: A. JOHNSON 3-15-93 CHECKED BY/DATE: SDR 3-24-93 ENGRG BY/DATE: SZ 3-28-93 METALLURGY BY/DATE: -----	MATERIAL/HEAT TREAT  TITLE: 2000 SERIES MOTOR SHAFT INSTALLATION
UNSPECIFIED RADII ARE ----	 THIRD ANGLE PROJECTION	MICROINCHES <input type="checkbox"/> MICROMETERS [MICROINCHES] <input type="checkbox"/> ARITHMETICAL AVERAGE <input checked="" type="checkbox"/>
UNSPECIFIED DRAFT ANGLES ARE ----		NUMBER: A-683-001 SCALE: 1/1 SHEET: 1 OF 1
DRAWING FORMAT CADD <input checked="" type="checkbox"/> MANUAL <input type="checkbox"/>	DO NOT SCALE	

