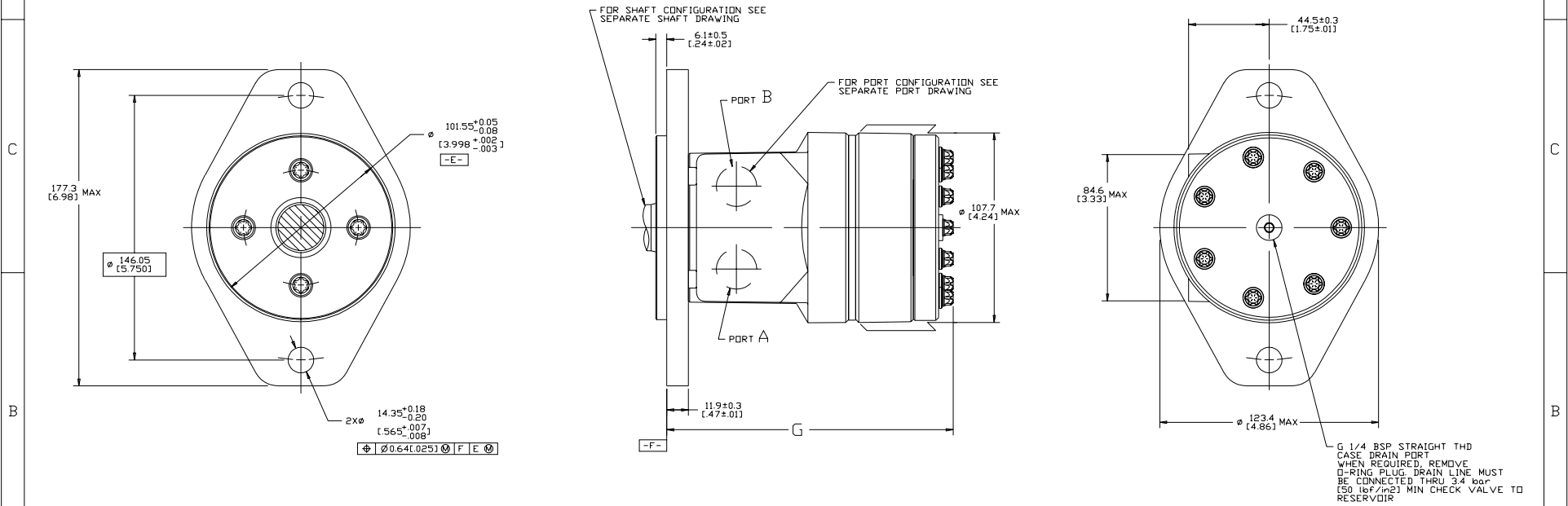


DISP. CODE	G	MAX
036	134.7	[5.30]
046	137.0	[5.39]
057	139.2	[5.48]
073	142.7	[5.62]
088	145.8	[5.74]
101	148.5	[5.85]
114	151.2	[5.95]
137	156.1	[6.14]
182	165.7	[6.52]
227	175.1	[6.89]

REV	DESCRIPTION	BY	CHK	DATE	ECN
A	ENGINEERING RELEASE	SMM		06-09-04	48257
B	-1X(B,C) WAS 177.1[6.97] MAX -2X(2B) WAS Ø122.2[4.81] MAX	SRM		04-07-04	ECR8166
C	-1) (8A) NOTE 2 WAS MOUNTING FLANGE : "H : -...." -2) (8A) NOTE 3 WAS CASE DRAIN : 2...	TTV	CSG	04-08-16	0070053



NOTE

1 ROTATION:  
STANDARD; WHEN FACING SHAFT END OF MOTOR, SHAFT TO ROTATE CLOCKWISE WHEN PORT 'A' IS PRESSURIZED. COUNTERCLOCKWISE WHEN PORT 'B' IS PRESSURIZED.  
REVERSE ; WHEN FACING SHAFT END OF MOTOR, SHAFT TO ROTATE CLOCKWISE WHEN PORT 'B' IS PRESSURIZED. COUNTERCLOCKWISE WHEN PORT 'A' IS PRESSURIZED.

2 MOUNTING FLANGE:  
DD, DN = 2 BOLT STD. 4.00/101.6 DIA. X 24/6.1 PILDOT. 565/14.35 DIA. MOUNTING HOLES ON 5.75/146.0 DIA. B.C. (SAE B)

3 CASE DRAIN:  
02 = G 1/4 BSP STRAIGHT THD PORT (END CAP)

**REVIEWED FOR CLASSIFICATION PER ESP-042**

UNLESS OTHERWISE SPECIFIED ALL DIMENSIONS ARE IN INCHES	DRAWING BASED ON ANSI Y14.5M-1982	
TOLERANCES	CATON CORPORATION - CONFIDENTIAL AND PROPRIETARY NOTICE TO PURCHASER: RECEIVING THIS DRAWING IMPLIES ACCEPTANCE OF THE TECHNICAL SPECIFICATIONS AND ALL DIMENSIONS SHOWN THEREON. EXTON MANUFACTURING, INC. 1425 LONE OAK ROAD EXTON, PENN. 19341	
UNSPECIFIED DIMS ARE	SPEC. SMM 07-02-04 MATERIAL/HEAT TREAT SPEC. JML 07-06-04 SPEC. AGJ 07-06-04	TITLE
UNSPECIFIED DRAFT ANGLES ARE	METALLURGY	S MOTOR INSTALLATION
DRAWING FORMAT (SEE 02 MIN. 1)	THIRD ANGLE PROJECTION DO NOT SCALE	REVISIONS NUMBER A-1470-204 SCALE 1/1 SHEET 1 OF 1