

DISPL CODE	G	MAX
022	138.3	[5.45]
025	139.1	[5.48]
028	138.3	[5.45]
035	142.1	[5.60]
045	142.1	[5.60]
059	145.2	[5.72]
073	148.5	[5.85]
089	152.0	[5.99]
097	153.9	[6.06]
113	157.4	[6.20]
141	163.7	[6.45]
179	172.3	[6.79]
226	182.8	[7.20]
451	233.6	[9.20]

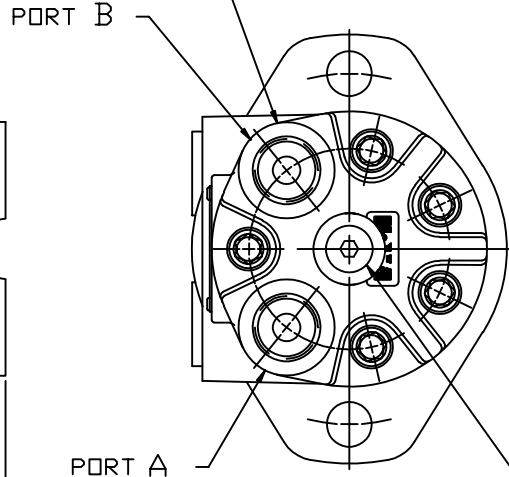
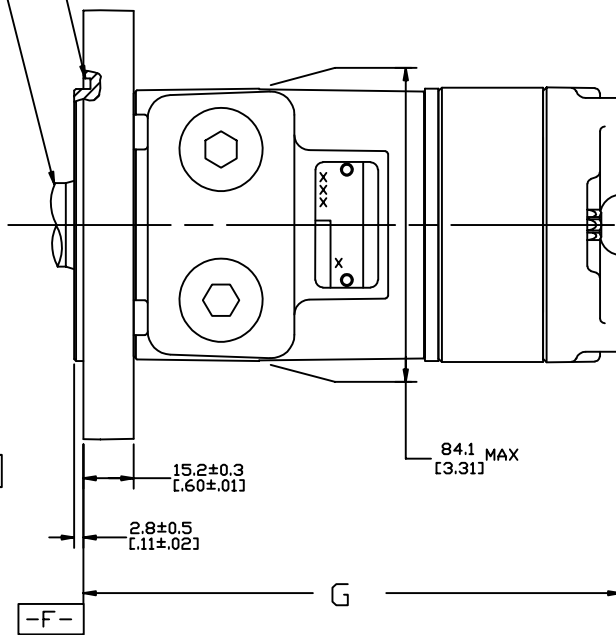
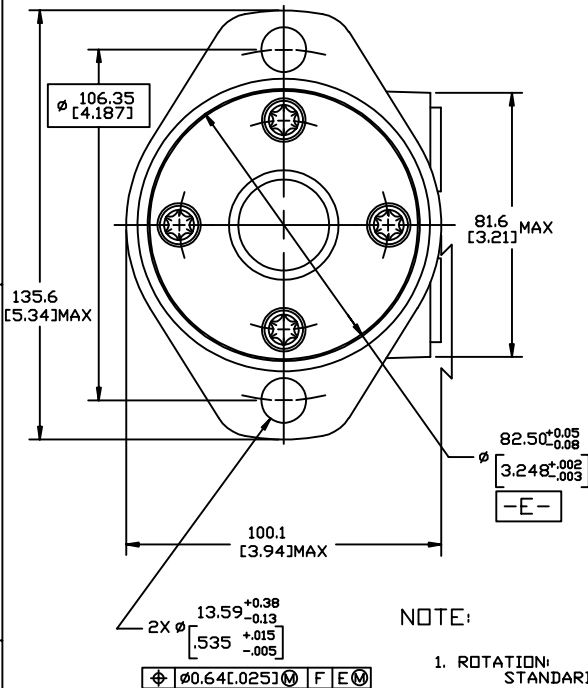
SYM	REVISION	BY	DATE	ECN
A	ENGINEERING RELEASE	RLL	11-18-87	14736
H	REVISED FOR STACK UP	HRK	9-27-88	M80161
J	(3A) NOTE 3 WAS CASE DRAIN : 1...	JVD	07-27-15	0065202

DISPL CODE	G	MAX
022	138.3	[5.45]
025	139.1	[5.48]
028	138.3	[5.45]
035	142.1	[5.60]
045	142.1	[5.60]
059	145.2	[5.72]
073	148.5	[5.85]
089	152.0	[5.99]
097	153.9	[6.06]
113	157.4	[6.20]
141	163.7	[6.45]
179	172.3	[6.79]
226	182.8	[7.20]
451	233.6	[9.20]

FOR SHAFT CONFIGURATION SEE SEPARATE SHAFT DRAWINGS.

GROOVE PROVIDED FOR 82.6[3.25] I.D. X 2.62[.103] CROSS SECTION O-RING. (DASH NO. 152)

FOR PORT CONFIGURATION SEE SEPARATE PORT DRAWING



SAE J1926/1/7/16-20 CASE DRAIN PORT WHEN REQUIRED, REMOVE O-RING PLUG. DRAIN LINE MUST BE CONNECTED THRU 50 PSI/3.4 BAR MIN. CHECK VALVE TO RESERVOIR.

NOTE:

- ROTATION: STANDARD; WHEN FACING SHAFT END OF MOTOR, SHAFT TO ROTATE CLOCKWISE WHEN PORT 'A' IS PRESSURIZED. COUNTERCLOCKWISE WHEN PORT 'B' IS PRESSURIZED. REVERSE ; WHEN FACING SHAFT END OF MOTOR, SHAFT TO ROTATE CLOCKWISE WHEN PORT 'B' IS PRESSURIZED. COUNTERCLOCKWISE WHEN PORT 'A' IS PRESSURIZED.
- MOUNTING FLANGE: AA = 2 BOLT STD: 82.6[3.25] DIA. X 3.0[.12] PILDOT, 13.59[.535] DIA. MOUNTING HOLES ON 106.2[4.18] DIA. B.C.
- CASE DRAIN: 01 = .4375-20 (END CAP)
- PORT TYPE: EB = .750-16 O-RING, END PORTED

REVIEWED FOR CLASSIFICATION PER ESP-042

UNLESS OTHERWISE SPECIFIED ALL DIMENSIONS ARE IN INCHES		DRAWING BASED ON ANSI Y14.5M-1982	
MILLIMETERS	<input checked="" type="checkbox"/>	EATON CORPORATION - CONFIDENTIAL AND PROPRIETARY NOTICE TO PERSONS RECEIVING THIS DRAWING AND / OR TECHNICAL INFORMATION	
TOLERANCES		THIS DOCUMENT, INCLUDING THE DRAWING AND INFORMATION CONTAINED THEREIN, IS CONFIDENTIAL AND IS THE EXCLUSIVE PROPERTY OF EATON CORPORATION, AND IS LOANED OR SUBJECT TO RECEIPT BY YOU AT ANY TIME BY YOUR POSSESSION OF THIS DOCUMENT. THE RECIPIENT ACKNOWLEDGES AND AGREES THAT THIS DOCUMENT CANNOT BE USED IN ANY MANNER ADVERSIVE TO THE INTERESTS OF EATON, AND THAT NO PORTION OF THIS DOCUMENT MAY BE COPIED OR OTHERWISE REPRODUCED WITHOUT THE PRIOR WRITTEN CONSENT OF EATON. IN THE CASE OF CONFLICTING CONTRACTUAL PROVISIONS, THIS NOTICE SHALL GOVERN THE TERMS OF THIS DOCUMENT. ©COPYRIGHT 2008 EATON CORPORATION. ALL RIGHTS RESERVED.	
JX ±	-	DRAWN	MLL
JXX ±	-	BY/DATE	10-21-87
JXXX ±	-	CHECKED	MG
< ±	-	BY/DATE	1-23-98
UNSPECIFIED RADII ARE:		ENGRG	VCW
UNSPECIFIED DRAFT ANGLES ARE:		BY/DATE	1-22-98
D SIZE		METALLURGY	-
		BY/DATE	-
		THIRD ANGLE PROJECTION	
		DO NOT SCALE	
		MATERIAL/HEAT TREAT	
		NUMBER	
		A-37-313	
		SCALE	
		1/1 SHEET 1 OF 1	