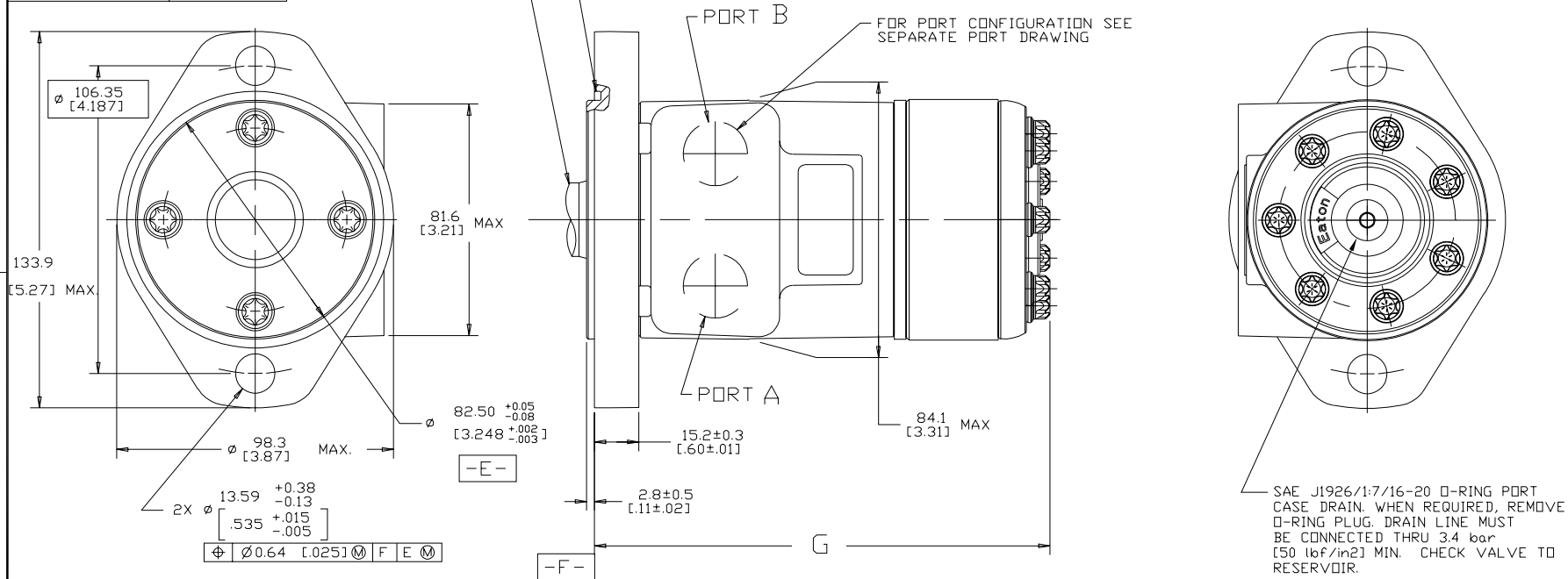


DISPLACEMENT CODE	G MAX
022	132.7 [5.22]
025	133.5 [5.26]
028	132.7 [5.22]
035	136.5 [5.37]
045	136.5 [5.37]
059	139.5 [5.49]
073	142.8 [5.62]
089	146.4 [5.76]
097	148.2 [5.84]
113	151.7 [5.97]
141	158.1 [6.22]
179	166.7 [6.56]
226	177.1 [6.97]
451	228.0 [8.98]

SYM	REVISION	BY	DATE	ECN
A	ENGINEERING RELEASE	RLL	11-10-87	14736
H	-1>UPDATED TO CURRENT STANDARD-2>(4D) UPDATED TAB FOR G MAX	SSD	10-19-10	M80231
J	-1>REVISED PICTORIALY -2>(4D)UPDATED TABULATION FOR G MAX	AAB	02-17-14	0054756
K	<1C>ADDED EATON LOGO TO ENDCAP	AAB	01-22-15	0061684
L	<4A> NOTE 3 WAS CASE DRAIN : 1...	JVD	07-27-15	0065202



NOTE:

- ROTATION:**
STANDARD; WHEN FACING SHAFT END OF MOTOR, SHAFT TO ROTATE CLOCKWISE WHEN PORT "A" IS PRESSURIZED. COUNTERCLOCKWISE WHEN PORT "B" IS PRESSURIZED.

REVERSE ; WHEN FACING SHAFT END OF MOTOR, SHAFT TO ROTATE CLOCKWISE WHEN PORT "B" IS PRESSURIZED. COUNTERCLOCKWISE WHEN PORT "A" IS PRESSURIZED.
- MOUNTING FLANGE:**
AA = 2 BOLT STD : Ø82.50[3.248] X 3.05[.120] PILOT,
Ø13.59[.535] MOUNTING HOLES ON Ø106.2[4.18] BOLT CIRCLE
- CASE DRAIN:**
01 = .4375-20 (END CAP)

REVIEWED FOR CLASSIFICATION PER ESP-042

UNLESS OTHERWISE SPECIFIED ALL DIMENSIONS ARE IN INCHES MILLIMETERS

TOLERANCES

.X ±	-
.XX ±	-
.XXX ±	-
< ±	°

UNSPECIFIED RADIUS ARE: -

UNSPECIFIED DRAFT ANGLES ARE: -

C SIZE

DRAWING BASED ON ANSI Y14.5M-1982

EATON CORPORATION - CONFIDENTIAL AND PROPRIETARY NOTICE TO PERSONS RECEIVING THIS DRAWING AND / OR TECHNICAL INFORMATION

THIS DOCUMENT INCLUDING THE DRAWING AND INFORMATION CONTAINED HEREIN IS CONFIDENTIAL AND IS THE EXCLUSIVE PROPERTY OF EATON CORPORATION, AND IS LOANED OR SUBJECT TO RECEIPT BY YOU AT ANY TIME BY YOUR POSSESSION OF THIS DOCUMENT. THE RECIPIENT ACKNOWLEDGES AND AGREES THAT THIS DOCUMENT SHALL BE KEPT IN A SECURE MANNER AND SHALL NOT BE REPRODUCED OR TRANSMITTED IN ANY FORM OR BY ANY MEANS, ELECTRONIC OR MECHANICAL, INCLUDING PHOTOCOPYING, RECORDING, OR BY ANY INFORMATION STORAGE AND RETRIEVAL SYSTEM, WITHOUT THE WRITTEN CONSENT OF EATON. IN THE CASE OF CONTRACTING CONTRACTORS PROVIDING THIS NOTICE SHALL REMAIN THE PROPERTY OF THIS DOCUMENT.

Copyright © 2008 Eaton Corporation. All rights reserved.

EATON Powering Business Worldwide
Eaton Hydraulics LLC
14615 Lone Oak Road
Eden Prairie, MN 55344
USA

DRAWN BY/DATE	RL	10-20-87	MATERIAL/HEAT TREAT	-
CHECKED BY/DATE	MD	1-23-90	-	-
ENGRG BY/DATE	WV	1-25-90	TITLE	-
METALLURGY BY/DATE	-	-	H MOTOR INSTALLATION	-

UNSPECIFIED DRAFT ANGLES ARE:	<input checked="" type="checkbox"/> THIRD ANGLE PROJECTION	MATERIAL: ARITHMETICAL AVERAGE	NUMBER	A-37-311
C SIZE	DO NOT SCALE	SCALE	1/1 SHEET	1 OF 1