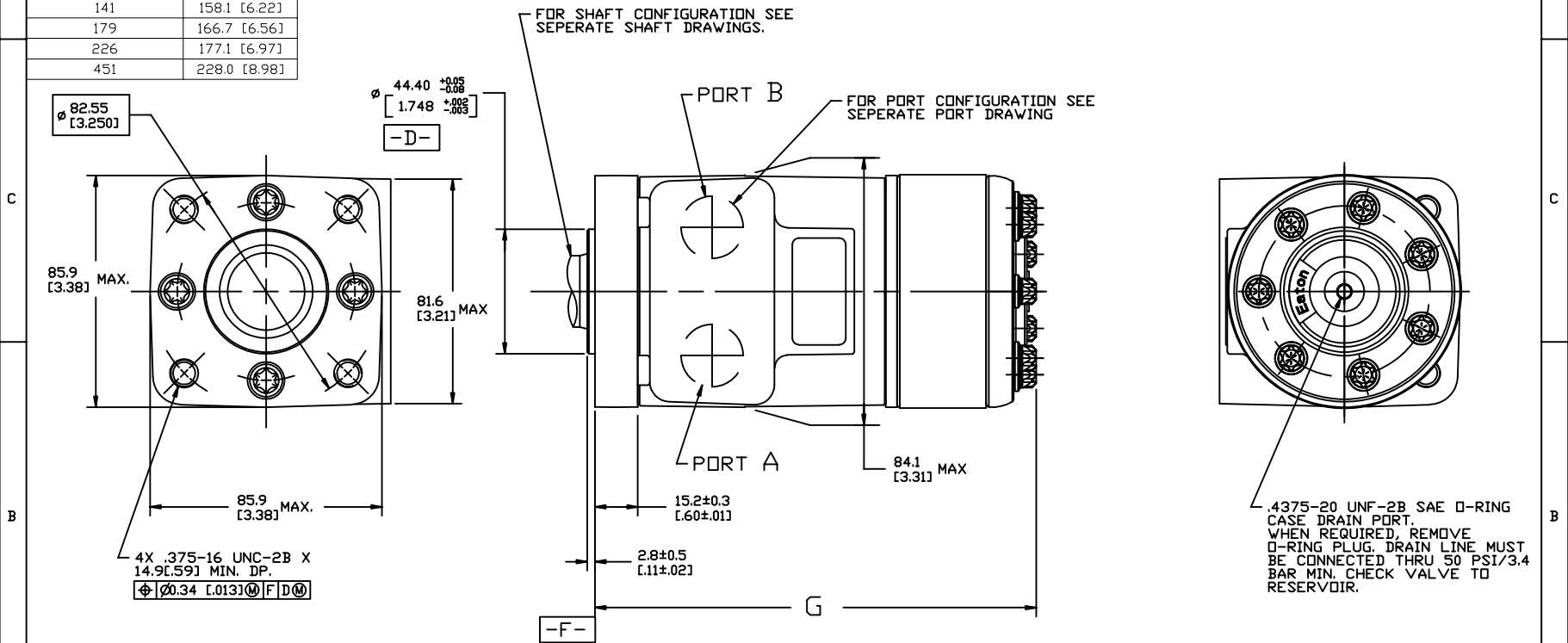


DISPLACEMENT CODE	G MAX
022	132.7 [5.22]
025	133.5 [5.26]
028	132.7 [5.22]
035	136.5 [5.37]
045	136.5 [5.37]
059	139.5 [5.49]
073	142.8 [5.62]
089	146.4 [5.76]
097	148.2 [5.84]
113	151.7 [5.97]
141	158.1 [6.22]
179	166.7 [6.56]
226	177.1 [6.97]
451	228.0 [8.98]

SYM	REVISION	BY	DATE	ECN
A	ENGINEERING RELEASE	RLL	11-18-87	14736
G	REVISED	SKS	08-16-89	M76593
H	1)REVISED PICTORIALY 2)X(4)UPDATED TABULATION FOR G MAX 3)X(2)REMOVED DIM 2.5(.10) MAX 4)UPDATED NOTE AS PER ESP-022-69	AAB	02-17-14	0054756
J	1)ADDED EATON LOGO TO ENDCAP	AAB	01-22-15	0061684
K	3) NOTE 3 WAS CASE DRAIN : 1...	JVD	07-27-15	0065202



NOTE:

- ROTATION: STANDARD; WHEN FACING SHAFT END OF MOTOR, SHAFT TO ROTATE CLOCKWISE WHEN PORT 'A' IS PRESSURIZED. COUNTERCLOCKWISE WHEN PORT 'B' IS PRESSURIZED. REVERSE ; WHEN FACING SHAFT END OF MOTOR, SHAFT TO ROTATE CLOCKWISE WHEN PORT 'B' IS PRESSURIZED. COUNTERCLOCKWISE WHEN PORT 'A' IS PRESSURIZED.
- MOUNTING FLANGE: BA = 4 BOLT STD: 44.40 [1.748] DIA. X 3.05 [1.20] PILOT, .375-16 UNC-2B MOUNTING HOLES ON 82.55 [3.250] DIA. B.C.
- CASE DRAIN: 01 = .4375-20 UNF-2B SAE O-RING PORT (END CAP)

REVIEWED FOR CLASSIFICATION PER ESP-042

DRAWING BASED ON ANSI Y14.5M-1982

EATON CORPORATION - CONFIDENTIAL AND PROPRIETARY NOTICE TO PERSONS RECEIVING THIS DRAWING AND / OR TECHNICAL INFORMATION

EATON

Powering Business Worldwide
Eaton Hydro-Matics, LLC
24625 Lorne Dale Road
Eden Prairie, MN 55344
USA

UNLESS OTHERWISE SPECIFIED ALL DIMENSIONS ARE IN INCHES [MILLIMETERS (INCHES)]	TOLERANCES .X ± ---- .XX ± ---- .XXX ± ---- Ø ± ----	DRAWN RLL BY/DATE 10-23-87	MATERIAL/HEAT TREAT -
UNSPECIFIED RADIUS ARE: [Symbol]	UNSPECIFIED DRAFT ANGLES ARE: [Symbol]	CHECKED KG BY/DATE 1-21-88	ENG'G WCV BY/DATE 1-25-88
UNSPECIFIED THIRD ANGLE PROJECTION [Symbol]	DO NOT SCALE	REWORKED [Symbol]	TITLE H SERIES MOTOR INSTALLATION
C SIZE	DO NOT SCALE	NUMBERS [Symbol]	NUMBER A-37-317
		ASSEMBLY [Symbol]	SCALE 1/1 SHEET 1 OF 1