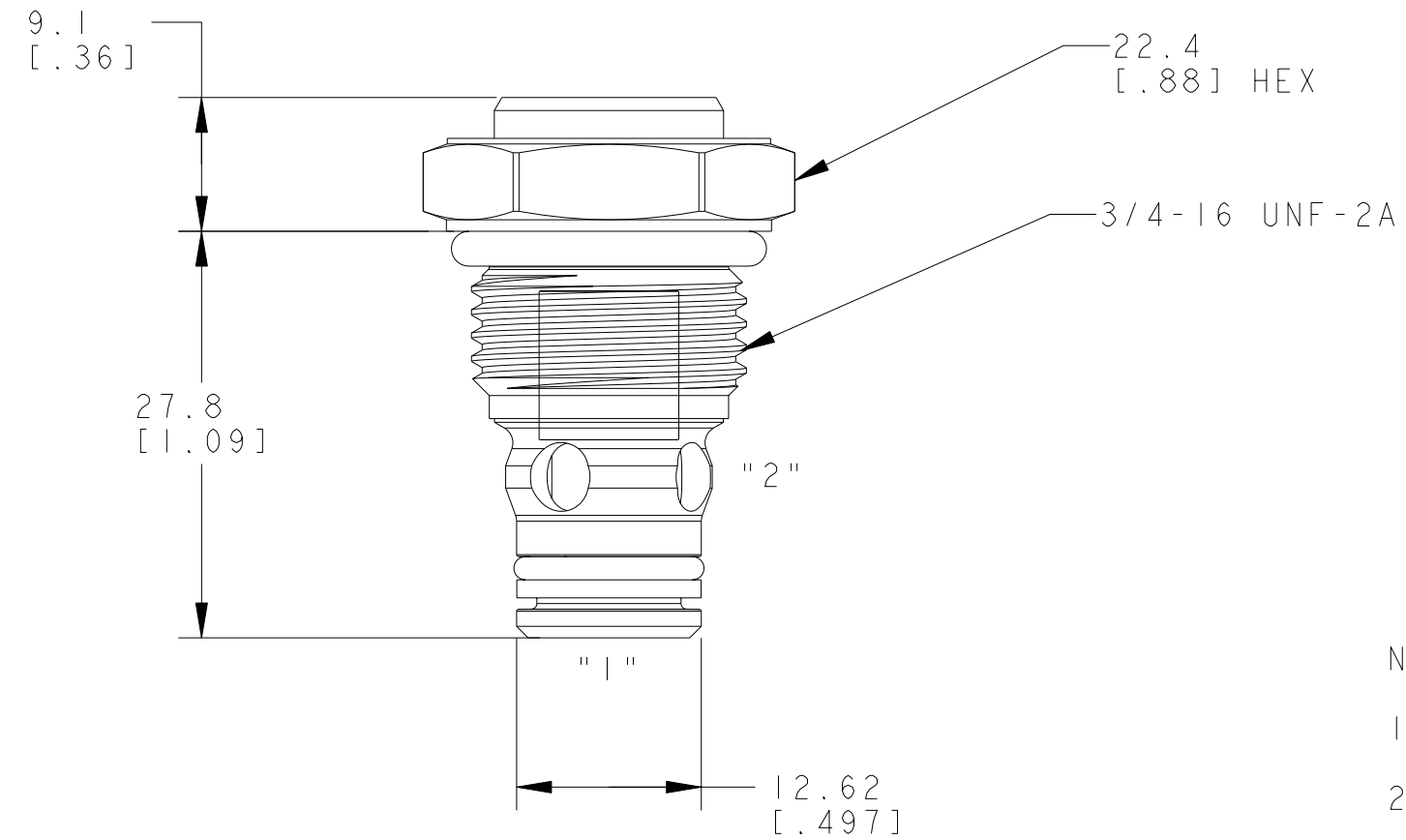
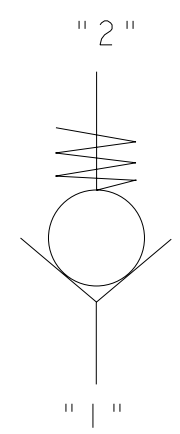


REV	DESCRIPTION	BY	CHK	DATE	ECN / MPS
A	ENGINEERING RELEASE	JGS	AH	2/12/05	M63978
B	REDRAWN AS ASSEMBLY WAS FAILING	NNS	NAS	7/21/08	0020045



NOTE:

- 1 USE VALVE CAVITY C-8-2
- 2 NET WEIGHT: .05 kg [.12 lb]
- 3 TORQUE INTO CAVITY:
ALUMINUM CAVITY: 34-41 N·m [25-30 lbf·ft]
STEEL CAVITY: 34-41 N·m [25-30 lbf·ft]



DISTRIBUTION CODE(S)

UNLESS OTHERWISE SPECIFIED ALL DIMENSIONS ARE IN INCHES <input type="checkbox"/> MILLIMETERS (INCHES) <input checked="" type="checkbox"/>	DRAWING BASED ON ANSI Y14.5M-1982	
	NOTICE TO PERSONS RECEIVING THIS DRAWING AND / OR TECHNICAL INFORMATION Eaton Corporation claims proprietary rights in the information disclosed hereon. This document is issued in confidence and is not to be reproduced or used to manufacture anything shown hereon without the written permission of the Eaton Corporation.	
TOLERANCES .X ± .XX ± .XXX ± ∠ ±	DRAWN JGS BY/DATE 9/30/04	MATERIAL/HEAT TREAT \
UNSPECIFIED RADII ARE: ----	CHECKED JGS BY/DATE 9/30/04	TITLE CHECK VALVE
UNSPECIFIED DRAFT ANGLES ARE: -----°	ENGRG NF BY/DATE 10/1/05	NUMBER A-2591-002
B SIZE	THIRD ANGLE PROJECTION DO NOT SCALE	SCALE 2/1 SHEET 1 OF 1

